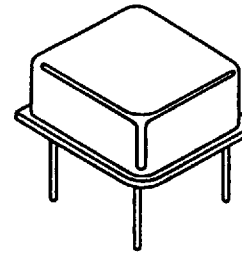




SQ3300

THRU-HOLE OSCILLATORS IN METAL PACKAGE
8-PIN (HALF SIZE) WITH TRI-STATE OUTPUT



STANDARD SPECIFICATIONS:

Frequency Range	250 kHz - 125.000 MHz
Frequency Stability over Operating Temperature Range	± 100 PPM is standard, but up to ± 25 PPM available.
Operating Temperature Range	0 - 70°C is standard, but can be extended to -40 to +85°C.
Input Voltage (Vcc)	5 Volt ± 10% is standard, but 3.3 Volt ± 10% available.
Input Current (Icc)	Depends on frequency and output load. See next page.
Symmetry (Duty Cycle) (See next page for definition.)	40/60 - 60/40% is standard, but 45/55% symmetry at 50% of Vcc (CMOS) or at Vcc=1.4V (TTL) available.
Rise and Fall Time (Tr & Tf) between 20% and 80% of Vcc	Depends on frequency and output load. See next page.
Logic "1" & Logic "0" (See next page.)	TTL: 2.4V MIN.; 0.4V MAX. CMOS: 90% of Vcc MIN.; 10% of Vcc MAX.
Tri-state Output	Normal output when pin #1 is open (no connection); Normal output when pin #1 is at logic "1"; High-impedance output when pin #1 is at logic "0".
Output Load	CMOS: drive up to 50 pF load; TTL: up to 10 TTL loads +15 pF

PART NUMBERING GUIDE:

■ The Pletronics part number for an SQ3300 oscillator consists of the following 3 elements:

1. Overall Frequency Stability over Operating Temperature Range:

- SQ3300: ± 100 PPM;
- SQ3345: ± 50 PPM;
- SQ3344: ± 25 PPM

2. Optional Alphabet Designator for Special Requirement:

- SQ3300: standard specifications;
 - SQ3300E: operating temperature range of -40 to +85°C;
 - SQ3300P: 45/55% symmetry at Vcc=1.4V (TTL);
 - SQ3300S: 45/55% symmetry at 50% of Vcc (CMOS).;
 - SQ3300V: operates at Vcc = 3.3V
- (There are other alphabet designators not listed here.)

3. Frequency of Operation in kHz or MHz

EXAMPLES: SQ3300V-10.000 MHz; SQ3345E-10.000 MHz.

■ When customer's requirements are non-standard, a special engineering part number will be assigned.

(continued)

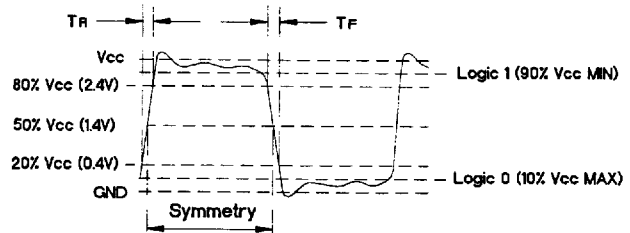
SQ3300

THRU-HOLE OSCILLATORS IN METAL PACKAGE
8-PIN (HALF SIZE) WITH TRI-STATE OUTPUT

Input Current (I_{cc}) and Rise and Fall time with 20 pF Load

Waveform

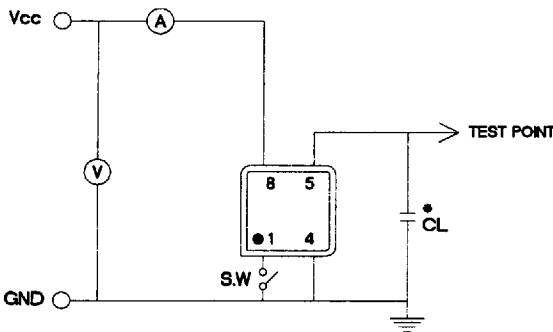
Freq. Range (MHz)	I _{cc} (mA) Maximum	Tr & Tf (nS) Maximum
0.250 - 39.999	25	7
40.000 - 71.999	35	5
72.000 - 125.000	50	3



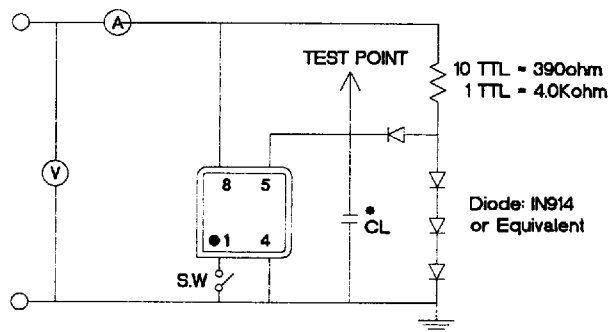
Voltage levels in () refer to TTL level

Recommended Test Circuit

CMOS LOAD

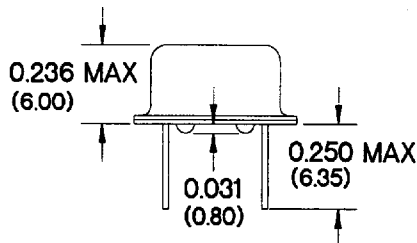
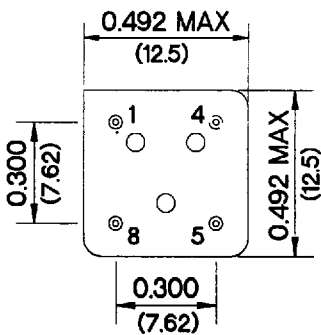


TTL LOAD



*CL (Capacitive Load): Includes the input capacitance of oscilloscope.

PACKAGE OUTLINE:



INCHES (MILLIMETERS)

PIN CONNECTIONS	
PIN	CONNECTION
1	ENABLE/DISABLE INPUT
4	GROUND
5	OUTPUT
8	Vcc

April 1, 1997